



627 Ruberta Avenue
Phone: (818) 291-0338
Email: armen@hyetechllc.com

IFCA-G-013
Glendale, CA 91201
Fax: (818) 291-0339
Web: www.hyetechllc.com

6876925HT Oil Filter Inlet Tube Assembly

For Warranty Policy & Model Eligibility, Please visit us at www.hyetechllc.com

Subject: Removal, cleaning, inspection, rework, repair, test and installation procedures for 6876925HT – Oil Filter Inlet Tube Assembly.

Compliance: Any time the oil pump is disassembled.

Notes: Refer to OEM's published engine operation data.

Technical aspects are FAA approved

Standard shop practices may be substituted for materials and procedures referenced herein provided they have been demonstrated as effective and safe for use with these parts or their OEM and other FAA approved equivalents.

1.0 REMOVAL

- 1.1 Remove the gearbox assembly in accordance with the manufacturer's instructions.
- 1.2 Disassemble gearbox housing assembly in accordance with the manufacturer's instructions.
- 1.3 Remove eight lube oil pump bolts and six washers. Remove oil filter inlet and bypass tubes & discard packings.

2.0 CLEANING

- 2.1 Agitate in petroleum solvent, P-D-680, Type 2 dry cleaning petroleum solvent or equivalent. Drain parts; blow petroleum solvent out of parts with dry filtered air.

3.0 INSPECTION

- 3.1 Inspect and repair or replace the oil filter inlet tube per Table 1:



627 Ruberta Avenue
Phone: (818) 291-0338
Email: armen@hyetechllc.com

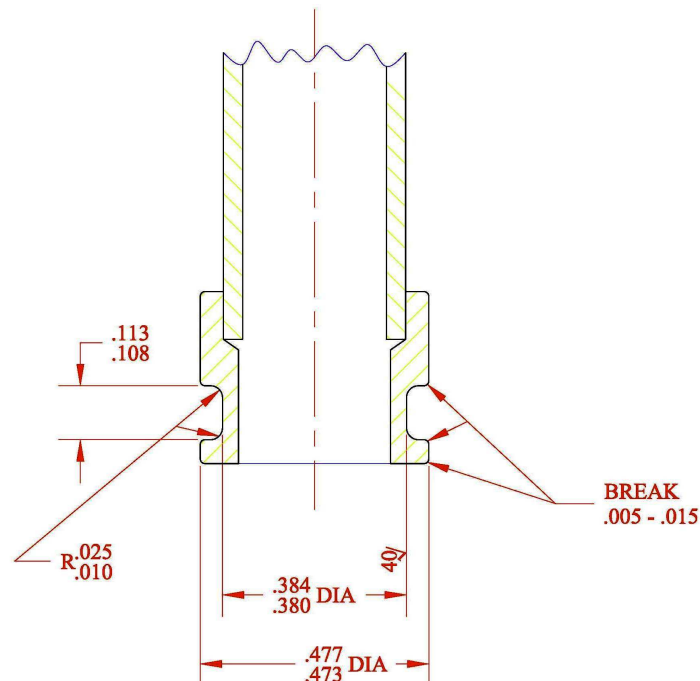
IFCA-G-013
Glendale, CA 91201
Fax: (818) 291-0339
Web: www.hyetechllc.com

Table 1

Tube assembly is a critical flight safety part. Critical characteristics are: Crack limits and Pressure test at 300 psi per AMS 2615

NOTE: 250-C20 SERIES CEB-1307 IS NOT APPLICABLE TO HYE-TECH OIL FILTER INLET TUBE.

Condition	Service Limit	Repair Limit	Corrective Action
Cracks (Visual & FPI)	None permitted.	No Repair.	Replace part
Preformed packing grooves for nicks and dents. (Visual)	None permitted.	Sealing capability is not affected.	Blend out protrusions using a fine file or Arkansas stone, FED-SS-S-736, Type 1.





627 Ruberta Avenue
Phone: (818) 291-0338
Email: armen@hyetechllc.com

IFCA-G-013
Glendale, CA 91201
Fax: (818) 291-0339
Web: www.hyetechllc.com

4.0 REPAIR

4.1 None

5.0 INSTALLATION

5.1 Assemble gearbox in accordance with the manufacturer's instructions until the oil pump is installed. Install lubricated, MIL-L-23699, preformed packings on the oil filter inlet and filter bypass tubes. Install tubes. Continue with gearbox assembly in accordance with manufacturers instructions.